



Pennsylvania Chapter Energy Services Coalition 2012 Workshop

Barbara B. Kinne
Research Assistant
Penn State Institutes of Energy and Environment
The Pennsylvania State University
University Park, PA

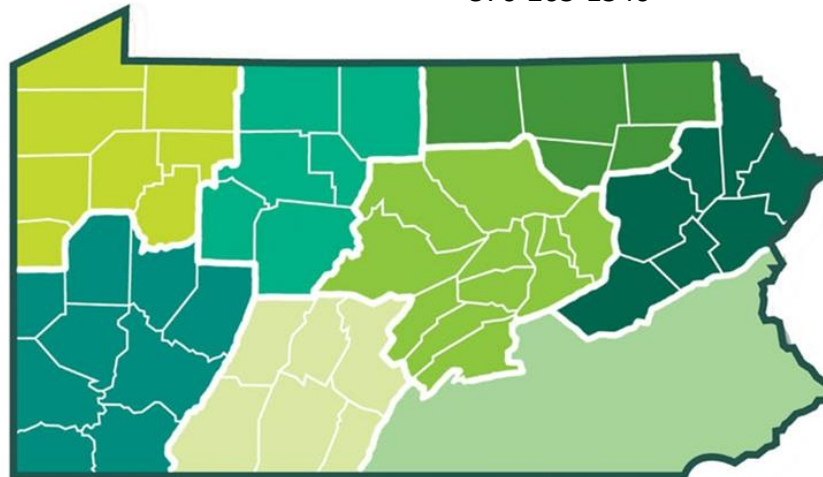


North Central PA Regional
Planning & Development
Commission
Barry Mayes
bmayer@ncentral.com
814-773-3162

Northern Tier Regional Planning
& Development Commission
Jeff Field
field@northerntier.org
570-265-1540

Northwest PA Regional
Planning & Development
Commission
William Rupert
williamr@nwcommission.org
814-297-7158

Southwestern
Pennsylvania
Commission
Laura Mundell
lmundell@spreregion.org
412-391-5590



Northeastern
Pennsylvania
Alliance
Kurt Bauman
kbauman@nepa-alliance.org
570-655-5581

Southern Alleghenies Planning &
Development Commission
Christopher Roland
croland@sapdc.org
814-949-6510

SEDA Council of Governments
Stacy Richards
srichards@seda-cog.org
570-524-4491

PA Energy Partnership

- Entering sixth year
- Over \$25M in EE/RE capital expenditures
- Over \$3M in annual energy savings
- Over \$9M cumulative (estimated) savings
- Tough economic environment...
- ...but widespread progress

Types of Projects

- Lighting conversions very popular
- Weatherization/Building Envelope
- LED Traffic Signal/Street Lighting
- Renewable Energy

Project Examples and Funding

- Soldiers and Sailors Memorial Hall
- Tyrone Hospital
- McKean County Courthouse
- Greater Scranton YMCA
- Loyalsock Municipal Building
- Sayre Historical Society

Soldiers & Sailors Memorial Hall

- Lighting upgrades, VSD for motors, weatherization, load-managing devices
- \$84,000 grant from PA Economic Development Association for combo historic preservation and energy conservation
- ~\$60K for energy implementation
- ~\$28K energy savings annually



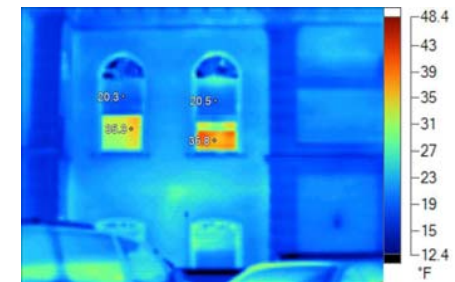
Tyrone Hospital

- Initial assessment and UBA by SAPDC
- Full lighting assessment by ESCO
- \$10,000 grant from SAPDC for T12 conversion
- \$13,000 in Act 129 rebates
- ARC grant application in process for \$150K for upgrades to HVAC



McKean County Courthouse

- Historic preservation/EE improvements
- 198 custom-built windows
- \$823K project cost, \$14K energy savings
- Capital reserve funds covered costs



Greater Scranton YMCA

- Lighting retrofits, occ sensor installations for 87,000 sq ft (gyms, pools, fitness areas)
- Self-financed through endowment fund
- \$65K total costs
- \$27K Act 129 rebates



Loyalsock Municipal Building

- Insulation, lighting retrofit, solar PV array with total costs of \$136K
- \$5K in Act 129 lighting rebates
- \$40K in ARC funding
- \$7,500 SREC market value
- Annual savings of \$4,600



Sayre Historical Society

- \$18,000 energy conservation costs as part of \$800,000 preservation/restoration project
- \$8000 from Northern Tier for windows and lighting upgrades
- Variety of federal, state, local development and conservation grants
- Capital campaign
- Naming opportunities



How did you pay for the project?

	Primary Financing	Secondary Financing
Federal, state or utility incentives	36%	7%
Loans or grants	22%	16%
Internal financing	56%	16%
Other	5%	2%